



WEST LODGE PARK
YOUR COUNTRY RETREAT

Accessibility at West Lodge Park Hotel

Updated August 2019

West Lodge Park was built from 1835 to 1838, and as such is an older building with a number of restrictions on accessibility.

I hope this **pictorial guide** will help assist those thinking of visiting the hotel as a guest of our bedrooms, restaurant, bar, conference or banqueting facilities.

There are **four parking spaces** for blue badge holders at the front of the hotel.



The front steps have a newly installed **handrail**.



There is a **wheelchair ramp** at the front entrance.



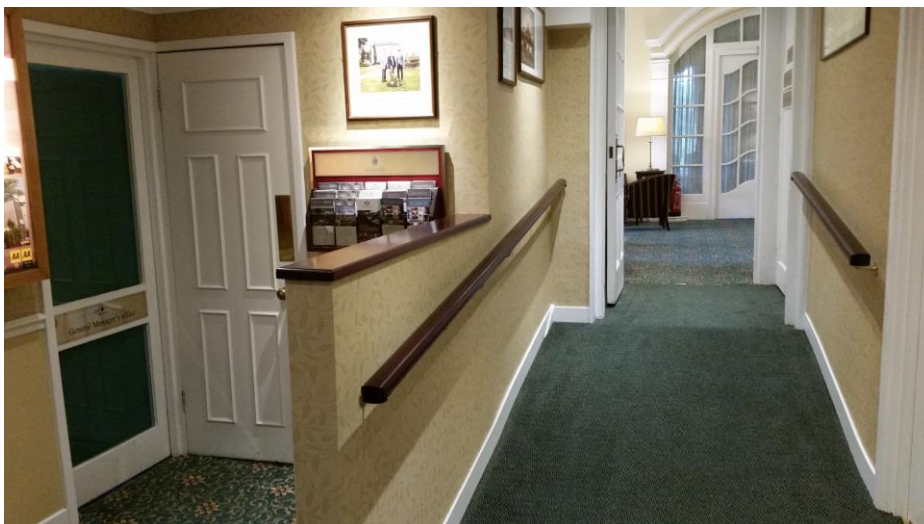
The **wheelchair ramp** circumvents the two entrance steps.



There is level access to the **front lounge**, King Charles, John Evelyn and Coventry Rooms



A **new (summer 2019) ramp** has been built which hugely improves the access to the rest of the hotel



Once past the reception ramp, **access to the Mary Beale restaurant, Terrace bar, Lancaster Suite and Edward Beale Room** is straightforward.



The (2016) **DDA compliant ground floor unisex accessible WC** is in the right of these doors by reception



This is the same view in the opposite direction, the new **accessible WC** is the right hand of the two doors.



This is the interior of the new **DDA compliant ground floor unisex accessible WC.**



The **compact lift** gives access to the second accessible WC on the first floor, as well as to the two accessible bedrooms. However larger electric wheelchairs will struggle to fit.



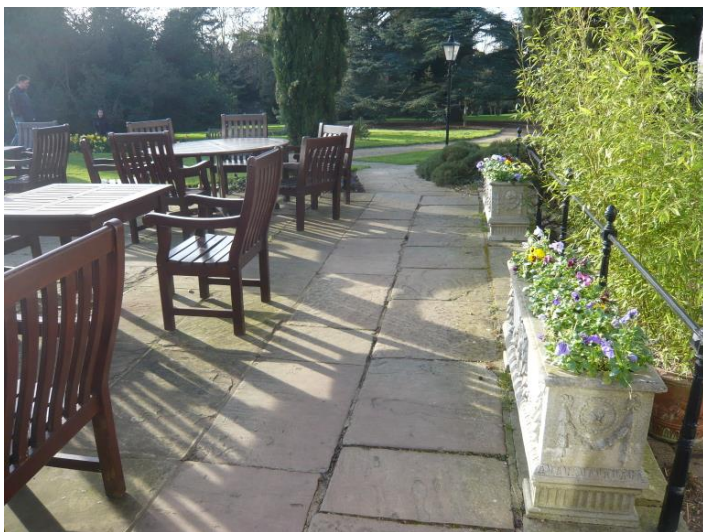
This is the **first floor accessible WC.**



Back on the ground floor, **The Terrace Bar** is level, the **Mary Beale Restaurant** is on two levels, with the Orangerie and North Bay sections being level, and the Lower Bay section being down four steps. Access to the **Edward Beale room** is also level in this part of the hotel.



Access to the **bar terrace** is level.



Another **option** for accessing the bar terrace, Cedar Lodge and Chestnut Lodge is to take the **gravel path** which starts in the main car park.



This is a good option if a wheelchair user, with the advantage of a pleasant access.



The terrace leads with flat access to the restaurant, bar, Edward Beale room and the Lancaster Suite, as well as to the Ladies and Gents WCs.



We have **two accessible bedrooms**, the **classic double/twin 23** and the **executive double/twin 33**. In addition we have **11 ground floor luxury rooms** in Chestnut Lodge, although none of these are specifically equipped with accessible equipment.



Access to **bedrooms 23 and 33** is via the **compact lift** which presents some problems for the very large electric wheelchairs.



The **accessible bedrooms** are on the first floor, with level access once out of the lift.



Bedroom 23 is just a stone's throw from the lift here, a newly refurbished classic double / twin bedded room.



There are handrails in the **bathroom of Bedroom 23**.



Bedroom 23 has **space to turn a wheelchair** in the bedroom and wider doors.



The newly refurbished (Nov 18) Bedroom 33 is five rooms away from the lift on the level corridor.





Accessible shower, and additional rails in the bathroom of bedroom 33.



Low level **tea and coffee making and ironing** facilities and safe in bedroom 33



Bedroom 33 is an **executive double / twin** bedded bedroom with fantastic views and lots of space to move around.



The **eleven bedrooms of Chestnut Lodge** are also suitable for wheelchair bound guests, as they are on the ground floor annexe just a few easy yards from the main house.



The **entrance to Chestnut Lodge** has just one low step here :



The **bathrooms** in these 11 **Chestnut Lodge** bedrooms are not particularly equipped with accessible rails etc, but are quite large with separate showers and the bedrooms are spacious.

The hard paths on the 35 acres of the **Beale Arboretum** are heavy going in a manual wheelchair but certain paths around the hotel are more accessible.





I hope that this brief guide to the accessibility of West Lodge Park assists you.

Our staff are very helpful and are willing to give you any assistance you may require.

It will be a pleasure to welcome you to this lovely hotel.

Andrew Beale

August 2019

Managing Director

Beales Hotels

www.bealeshotels.co.uk

“Generations of excellence since 1769”

